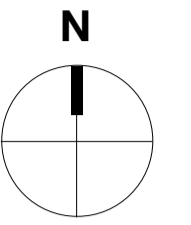
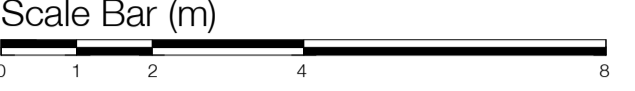


The use of this data by the recipient acts as an agreement of the following statements:
 Do not use this data if you do not agree with any of the following statements:
 Ryder Architecture has co-ordinated relevant information received from third parties, but are not responsible for the content of the information received from others.

The controlled version of this drawing should be viewed in DWG or PDF format not DWG or other formats. All prints of this drawing must be made in full colour.

Where this drawing has been based upon Ordnance Survey data, it has been reproduced under the terms of Flyder Licence No. 10000144. Reproduction of this drawing in whole or in part is prohibited without the prior permission of Ordnance Survey.

Do not scale the drawing. Use figured dimensions in all cases. Check all dimensions on site. Report any discrepancies in writing to Flyder before proceeding.



Area Schedule NIA			
Name	Level	Area	NIA / GIA
Core Level 00	Not Placed	0 m ²	0%
Core Level -01	Level -01	225 m ²	4%
Core Level 00	Level 00	229 m ²	4%
Core Level 01	Level 01	180 m ²	3%
Core Level 02	Level 02	179 m ²	3%
Core Level 03	Level 03	179 m ²	3%
Core Level 04	Level 04	179 m ²	3%
Building Common Area		1172 m ²	21%
Office Level 00	Level 00	806 m ²	14%
Office Level 01	Level 01	945 m ²	17%
Office Level 02	Level 02	946 m ²	17%
Office Level 03	Level 03	946 m ²	17%
Office Level 04	Level 04	748 m ²	13%
Office Area		4392 m ²	79%
		5563 m ²	100%

Level -01 NIA			
Name	Level	Area	NIA / GIA
Core Level -01	Level -01	225 m ²	100%
		225 m ²	100%

Level 00 NIA			
Name	Level	Area	NIA / GIA
Core Level 00	Level 00	229 m ²	22%
Office Level 00	Level 00	806 m ²	78%
		1035 m ²	100%

Level 01 NIA			
Name	Level	Area	NIA / GIA
Core Level 01	Level 01	180 m ²	16%
Office Level 01	Level 01	945 m ²	84%
		1125 m ²	100%

Level 02 NIA			
Name	Level	Area	NIA / GIA
Core Level 02	Level 02	179 m ²	16%
Office Level 02	Level 02	946 m ²	84%
		1125 m ²	100%

Level 03 NIA			
Name	Level	Area	NIA / GIA
Core Level 03	Level 03	179 m ²	16%
Office Level 03	Level 03	946 m ²	84%
		1125 m ²	100%

Level 04 NIA			
Name	Level	Area	NIA / GIA
Core Level 04	Level 04	179 m ²	19%
Office Level 04	Level 04	748 m ²	81%
		928 m ²	100%

P8	Stage 3 issue	FR	JSE	19/11/20
P7	General update following DTMO3	FR	JSE	10/11/20
P6	Update following structural and MEP design input	FR	JSE	21/10/20
P5	Update following DTMO1	FR	JSE	09/10/20
P4	General update following client engagement	FR	JSE	02/10/20
P3	Update following market feedback and VE meetings	FR	JSE	25/09/20
P2	Update following kick off meeting	FR	JSE	18/09/20
P1	Revision 2	FR	JSE	24/07/20

Rev	Description	Drawn	Checked	Date
-----	-------------	-------	---------	------

Substability Information

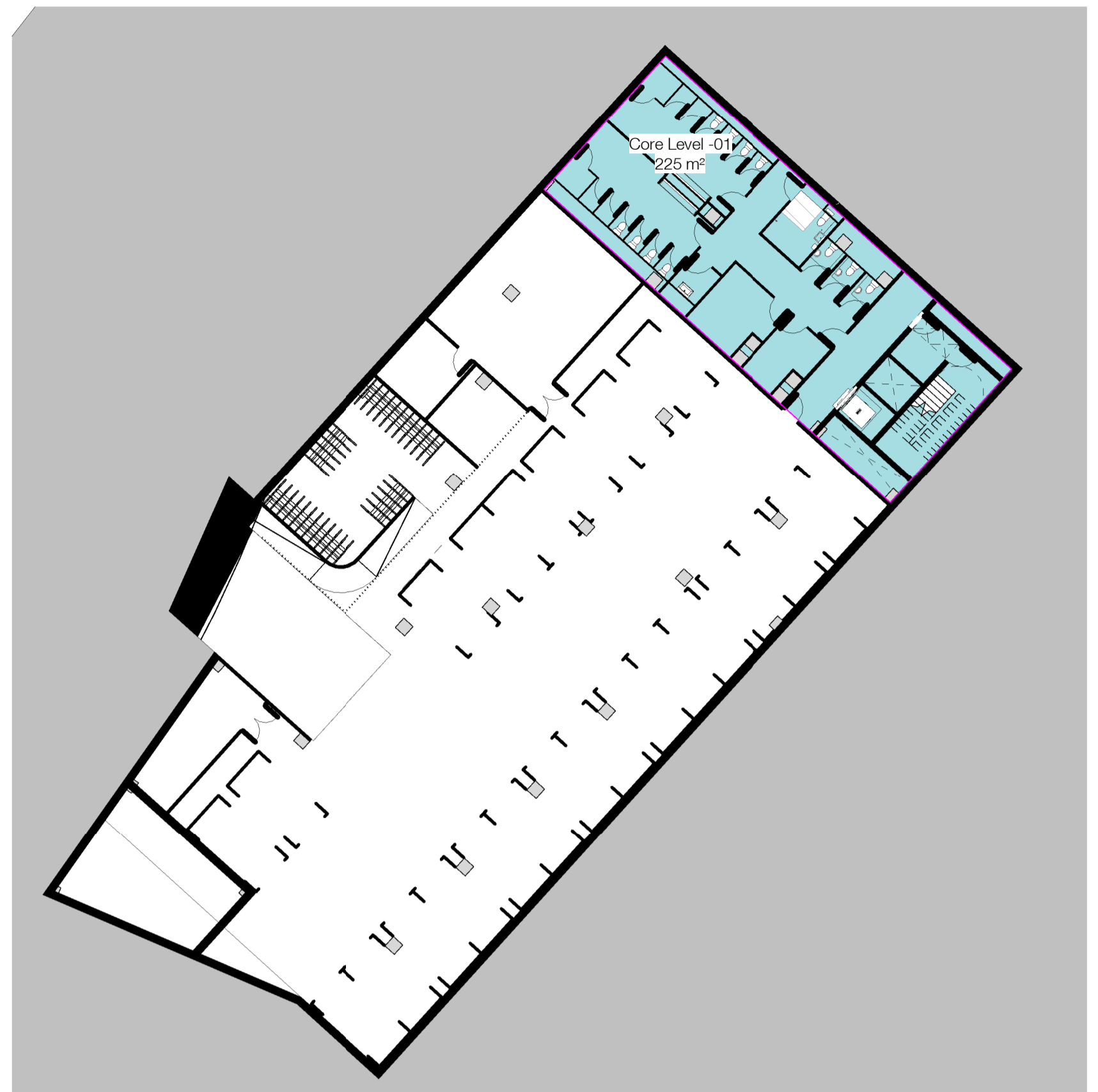
Project Information

Muse
 Harton Quays
 South Shields

Drawing Information

NIA Plan

Drawing Number	Project ID	Originator	Zone	Level	Type	Role	Number
HTQ	-	RYD	-	00	-	DR	- A - 3011
Project Number	Scale	at A1	Status	Revision			
10254-00	1 : 250	SZ	P8				



6 Level -01
1 : 250



1 Level 00
1 : 250



2 Level 01
1 : 250



3 Level 02
1 : 250



4 Level 03
1 : 250



5 Level 04
1 : 250